

Why Use NITMIX?

- All Natural
- No harsh chemicals
- No pesticides
- Very gentle
- Pleasant to use
- Long lasting effect
- Economical
- Clears resistant lice
- Use as often as you like
- Prevention is easier than cure

NITMIX Ltd

PO Box 5605, Loughborough,

LE12 6ZD, UK

Tel 01509 856177

(Tel 011 44 1509 856177 from USA)

Info@nitmix.com

Finding and removing head lice.

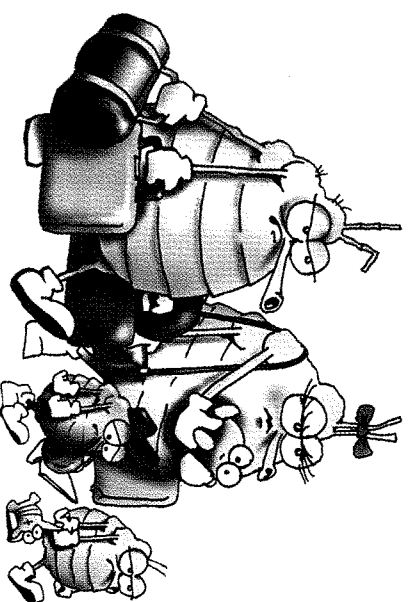
1. Massage NITMIX Wet Combing Aid right down into the roots of dry hair and leave for 10-15 Minutes
2. Work through all the hair with a fine toothed comb wiping the comb regularly on a white tissue to remove the lice.
 - Large adult lice are about the size of a sesame seed and are all shades of reddish brown.
 - Tiny juvenile lice are as small as a grain of sand and all shades of brown, from very light to almost black.
3. Shampoo out any excess oil.
4. Repeat the combing every 2-3 days until your comb is clear after every stroke.

Maintaining lice free healthy hair:

1. When the hair is washed put 3-4 drops of PURE NITMIX in the final rinse, diluted in a pint (500ml) of water, and allow the hair to dry naturally.
2. Keep the smell of NITMIX fresh between washes by spraying daily with a dilute solution of PURE NITMIX. 10-12 drops of PURE NITMIX in ¼ pint of water is enough for several weeks.
3. Check the hair regularly using a fine toothed comb. Remove any lice immediately using NITMIX Wet Comb aid. Keep checking for seven days after finding any fresh lice or eggs.

NITMIX®

Wet Combing Aid



Making head lice homeless!

A simple, natural, step by step solution to the problem of head lice.

www.nitmix.com

The "Tell Tale Signs" of head lice

- Itching and scratching
- Pale pink rash on the skin above the hairline around the back of the neck and behind the ears
- Small mobile bugs on the scalp and in the hair about the size of a sesame seed or smaller
- Little white/cream buds on the hair shafts, usually near the skin, that won't slide down the hair when pulled
- Very tiny black specs in the roots of the hair, on the pillow or in your comb. These are either tiny baby lice or lice faeces.

Any of these signs may indicate a case of head lice and should be checked out using NITMIX Wet Combing Aid.

Head lice are most common in young children, especially little girls. They are transferred mostly by head to head contact or sharing very intimate things like hair brushes.

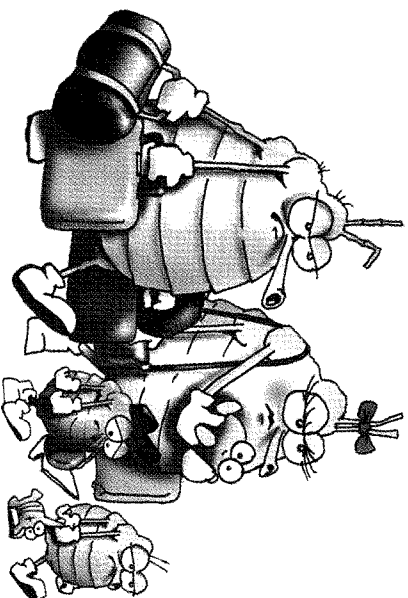
The probability of catching head lice by transfer on clothes, toys, swimming, shared transport are very tiny and should not concern parents too much.

Washing everything in the house is a waste of time and energy and spraying pesticide in the house or on the bedding is an over reaction and should be avoided at all cost.

Concentrate on getting the kids heads lice free using NITMIX Wet Combing Aid and you will be fine, really you will.

NITMIX[®]

Wet Combing Aid



Making head lice homeless!

NITMIX is distributed world-wide from our offices in the United Kingdom via our web site at www.nitmix.com and www.nitmix.co.uk

You can submit your own questions to us by e-mail at info@nitmix.com and we will answer them without obligation.

What is NITMIX?

NITMIX is a very simple logical way to detect, remove and discourage head lice.

As soon as you see a "Tell Tale Sign" of head lice find out for sure if you have a problem or not

NITMIX Wet combing Aid will quickly tell you what is going on in your kid's hair. Wet combing is far more accurate than visual inspections for head lice and helps avoid unnecessary treatments due to uncertainty.

As you check the hair with NITMIX Wet Combing Aid you will already be removing any lice present and will be on your way to a lice free healthy head of hair.

You will very quickly and easily harvest all sizes of lice and eggs from the hair. All types of hair are made easier to comb by NITMIX Wet Combing Aid saving time and tears. Long, thick, permed or curly hair becomes easy to comb without tugging or pulling. Hair is left smooth and shiny and easy to manage.

Head lice can only live on humans and they seek us out for food and shelter. When we disguise our natural scent with NITMIX head lice fail to recognise us as a source of food and leave us alone helping to maintain natural health hair.

NITMIX is registered in the UK as a Class 1 Medical Device with the Medicines and Healthcare Products Regulatory Agency and conforms to Council Directive 93/42/EEC of June 1993 concerning medical devices.

NITMIX is registered in the USA as a Medical Device with the Food and Drug Administration, Center for Devices and Radiological Health. No.s 9062353

